

Ask Me! Survey
Use of Data for Program
Enhancement



Bonham Research

Human Services Research & Evaluation

Purposes of Outcome Information

- Provide Information
- Improve Programs
- Guide Judgments

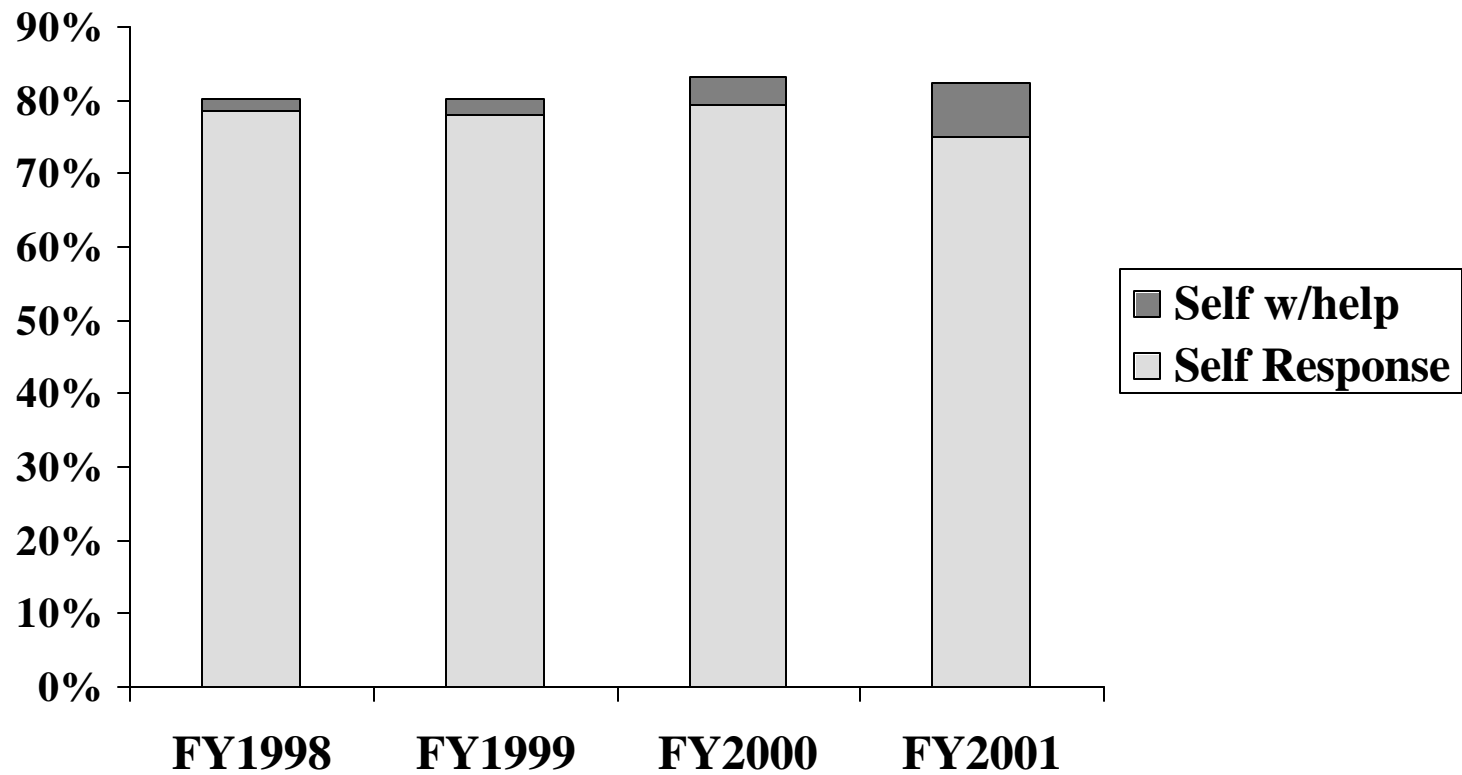
Ask Me! Approach to Quality

- Long-term quality of life outcomes
- 75% of questions from *Signs of Quality*
- Consumers for source of information
- Peers as professionals data collectors:
- Overall quality vs. minimum standards
- Agency background and service data

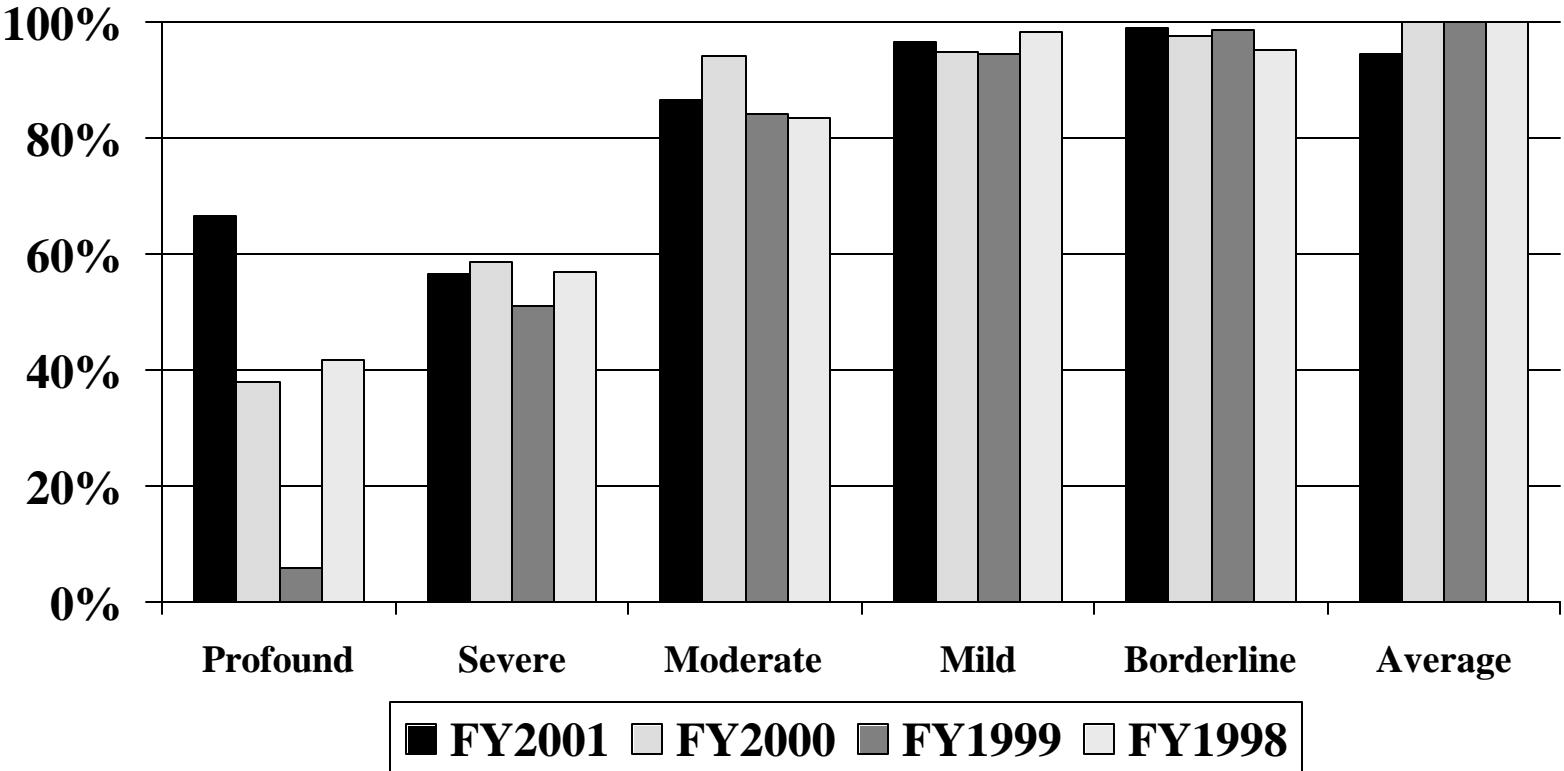
Ask Me! Survey Development

- FY1998: 10 agencies, 237 consumers, voluntary
- FY1999: 21 agencies, 492 consumers, voluntary
- FY2000: 28 agencies, 710 consumers, voluntary
- FY2001: 34 agencies, 979 consumers, voluntary
- FY2002: 34 agencies, 1000 consumers, required

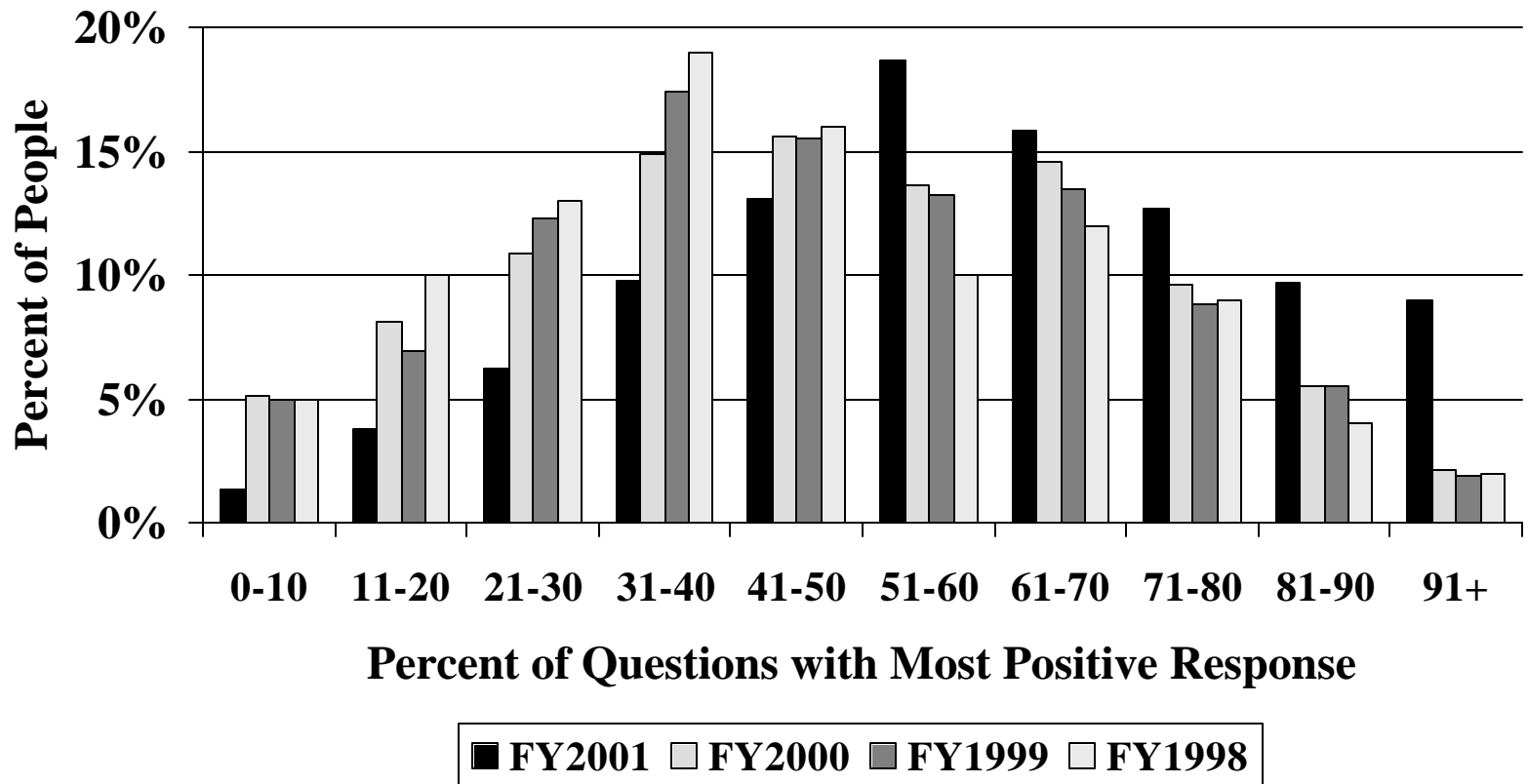
Percent Responding for Self



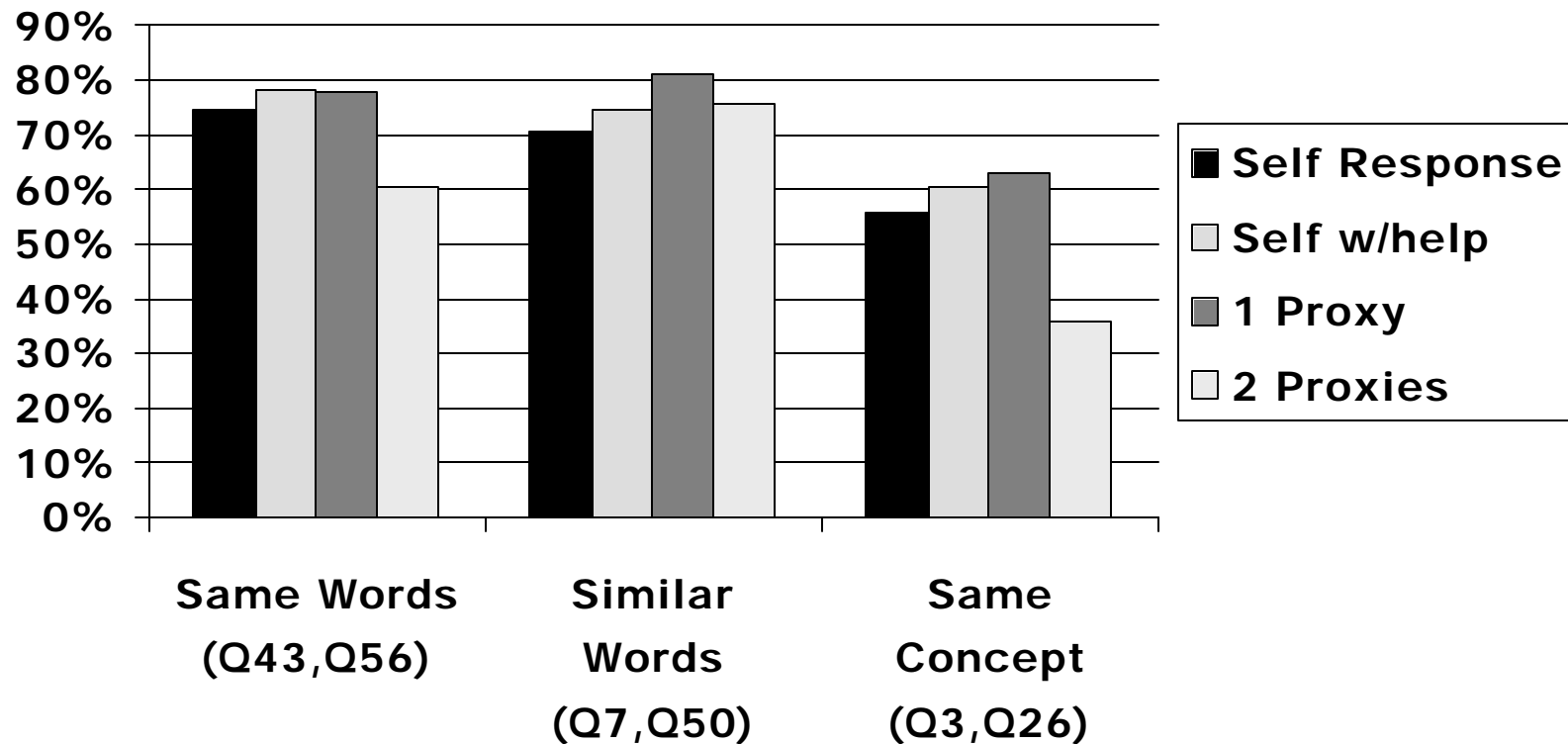
Percent Responding for Self by IQ



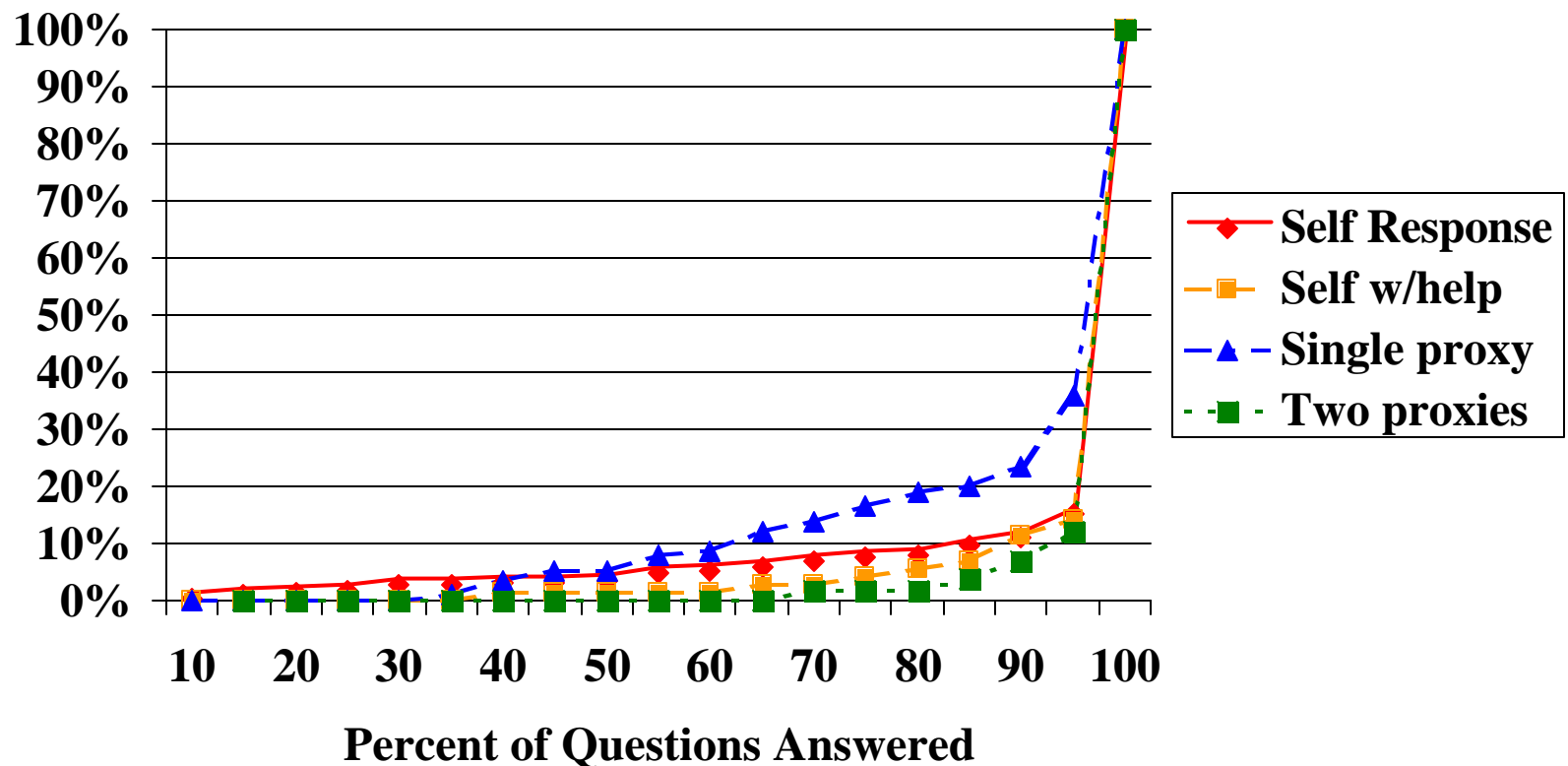
Percent of Questions with Most Positive Response



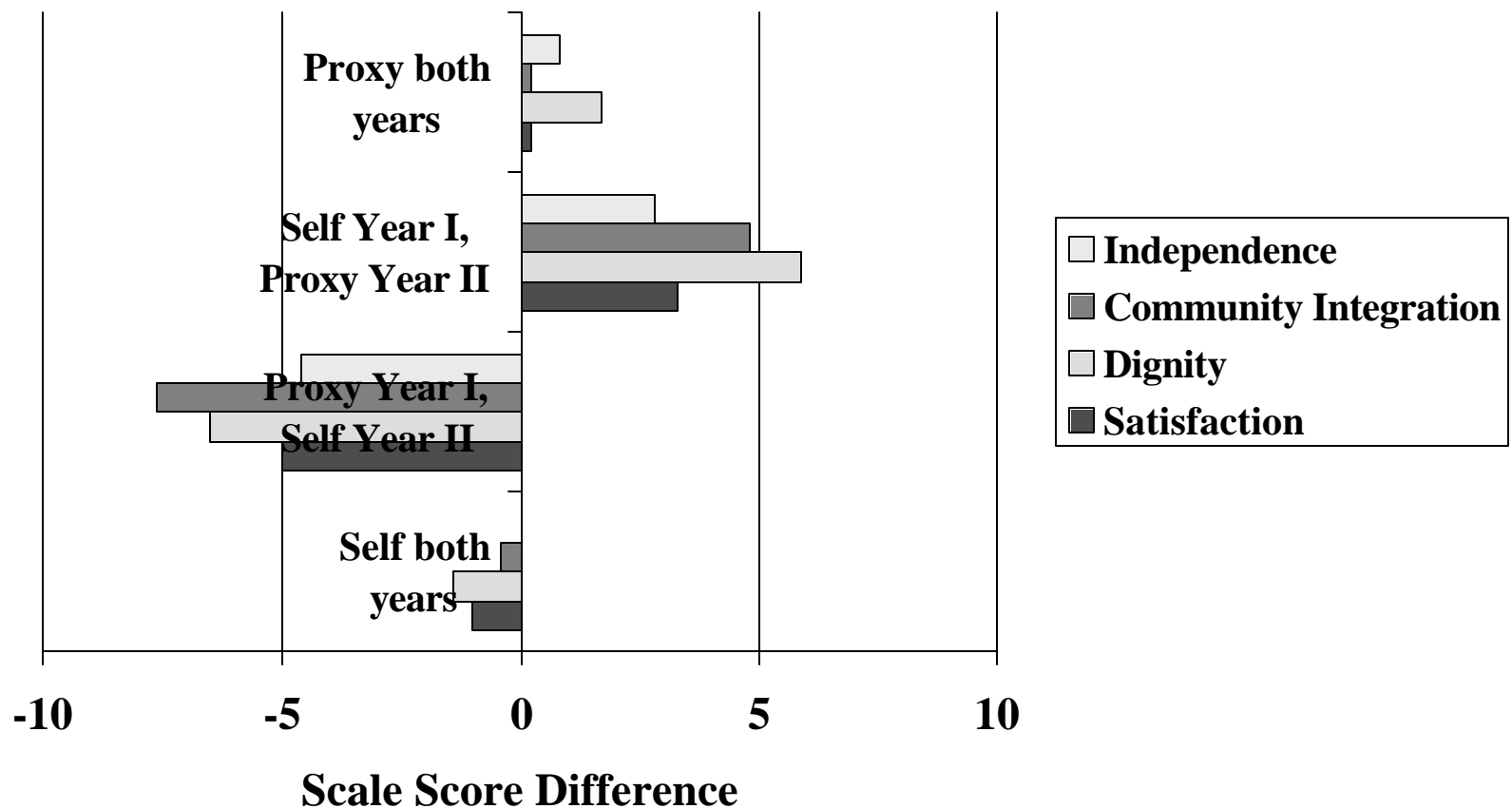
Internal Agreement: FY2001



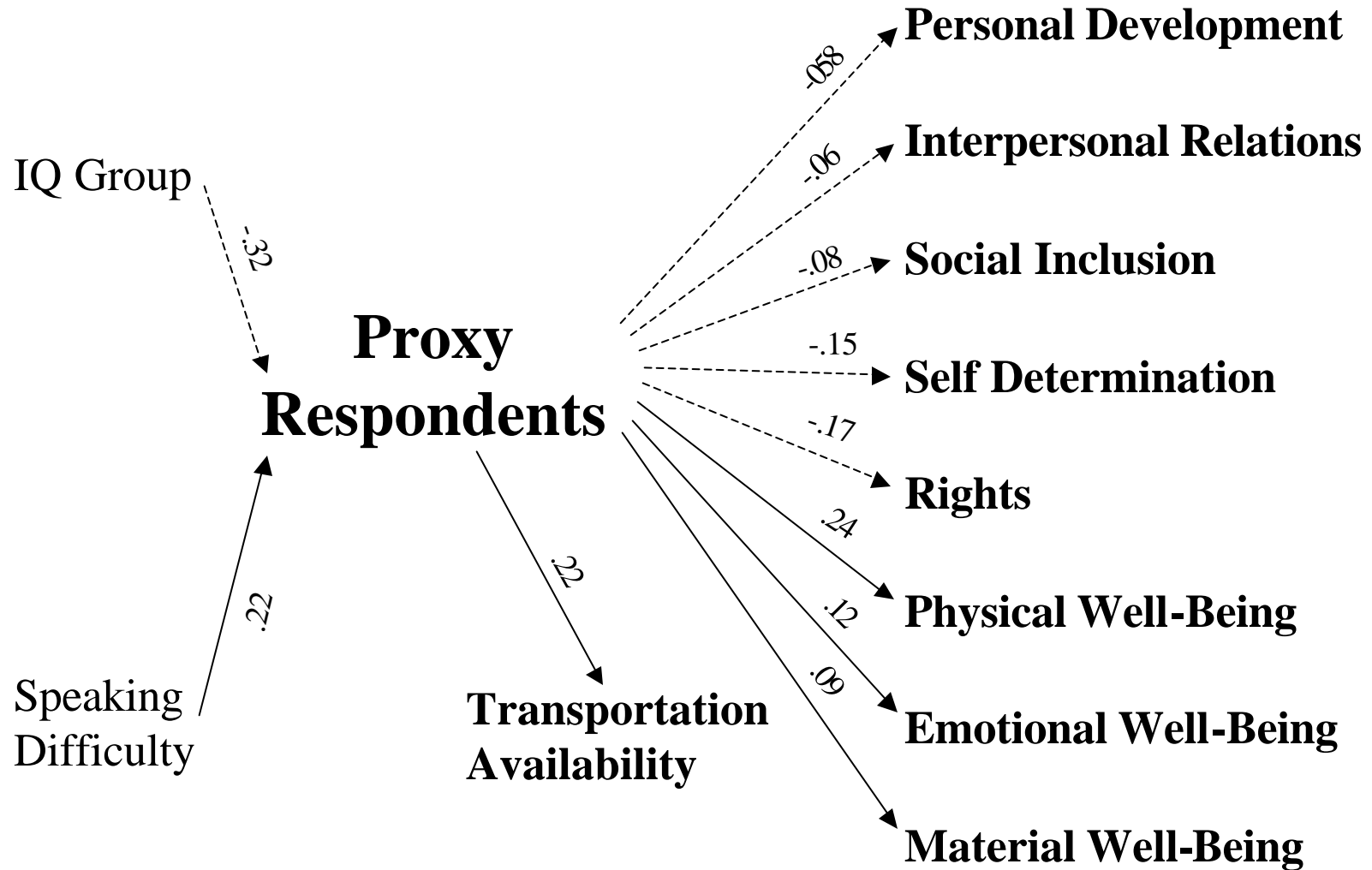
Number of Questions Answered: FY2001



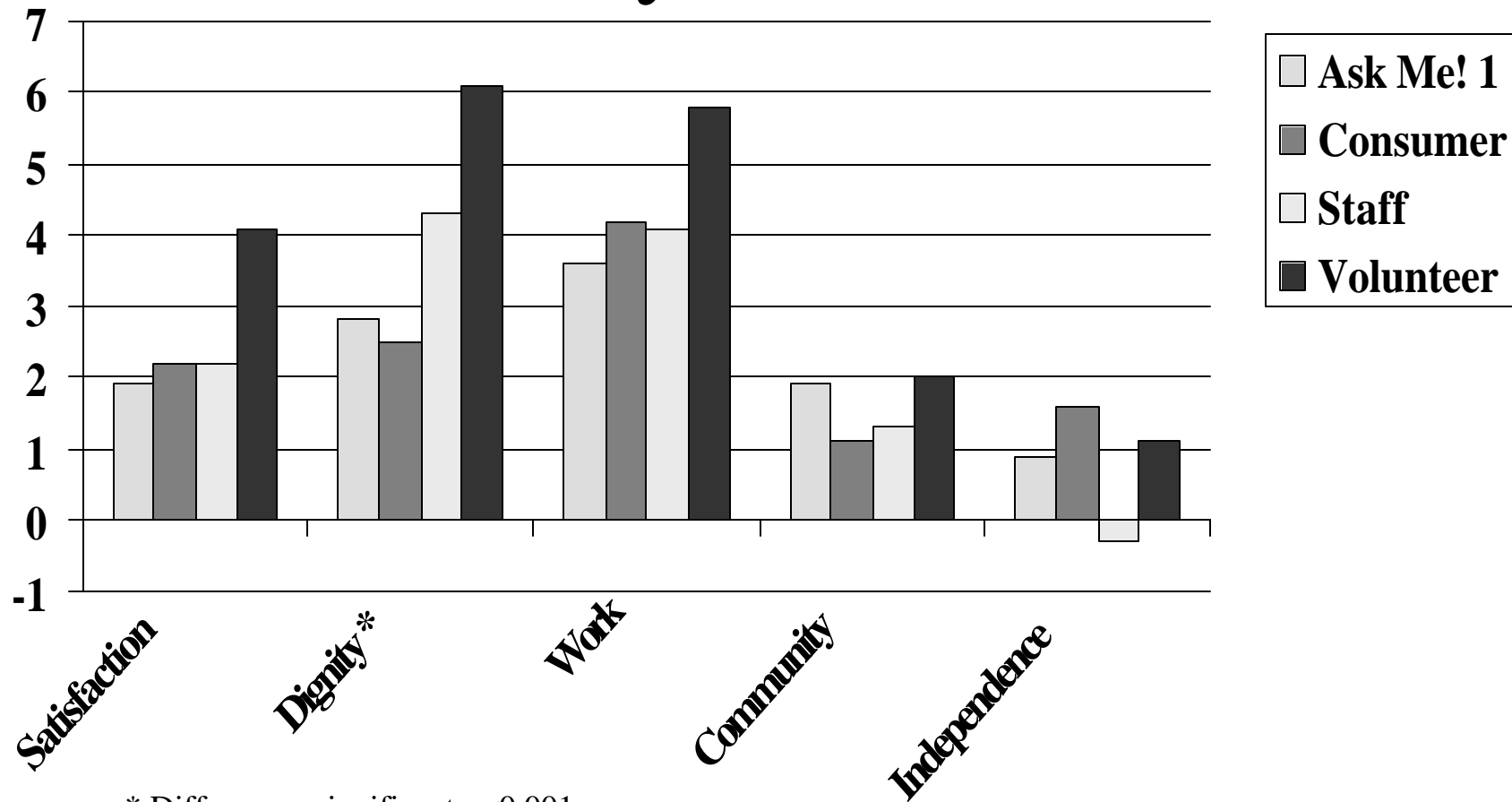
Average Change in Scale Scores: FY1998 to FY1999



Proxy Influences: FY2001

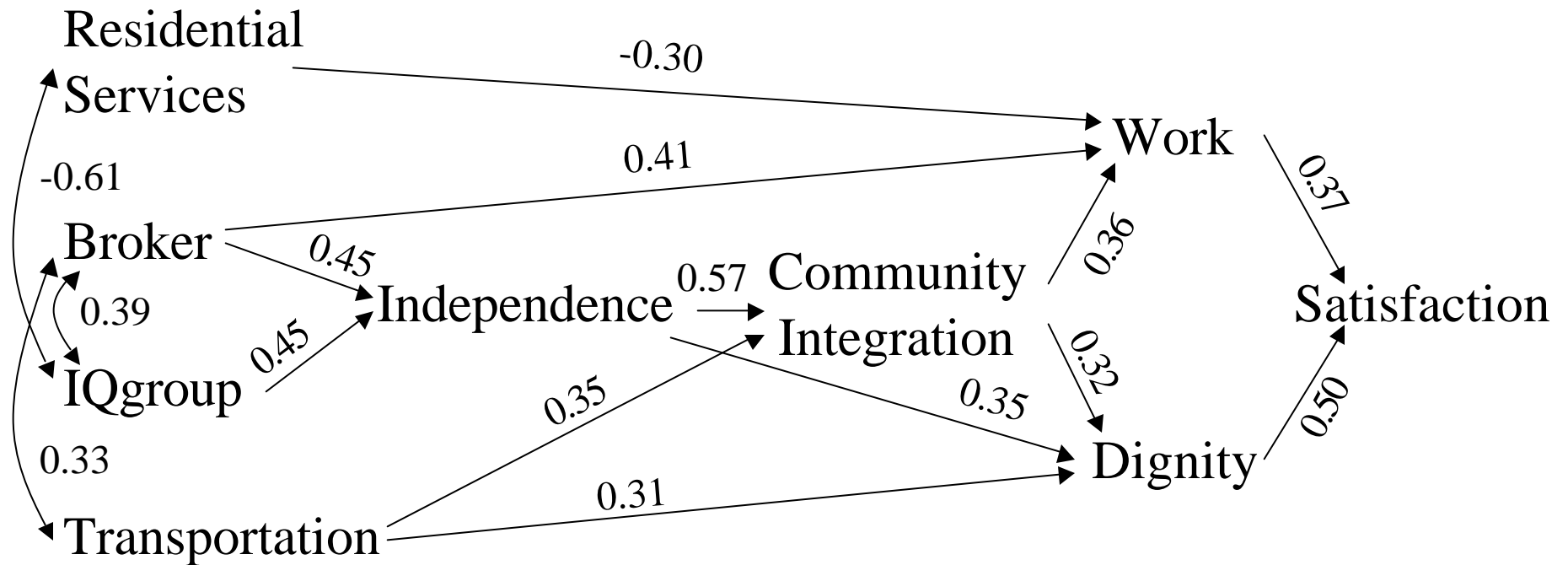


Quality of Life by Interviewer: Fy1998

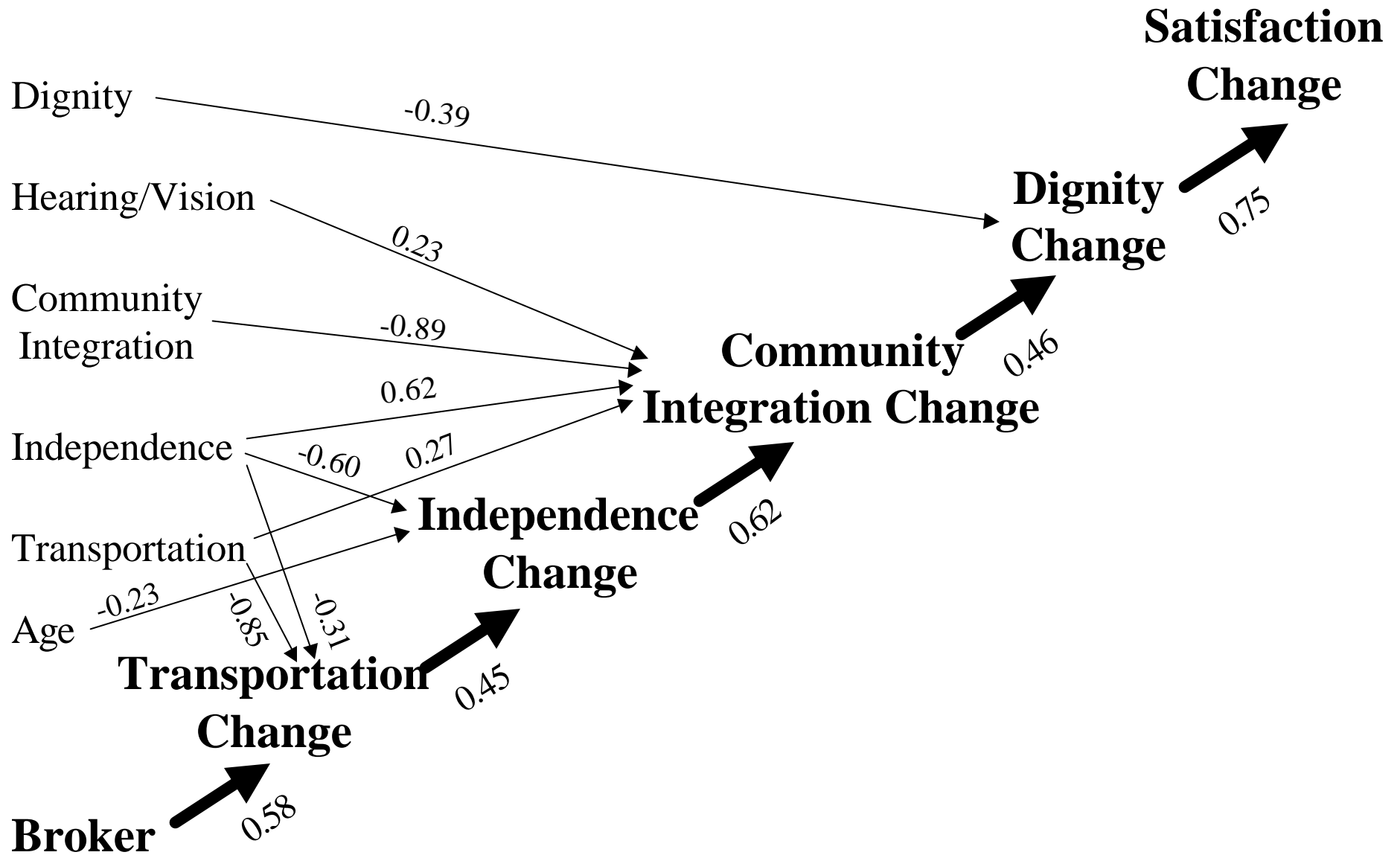


* Differences significant $p < 0.001$

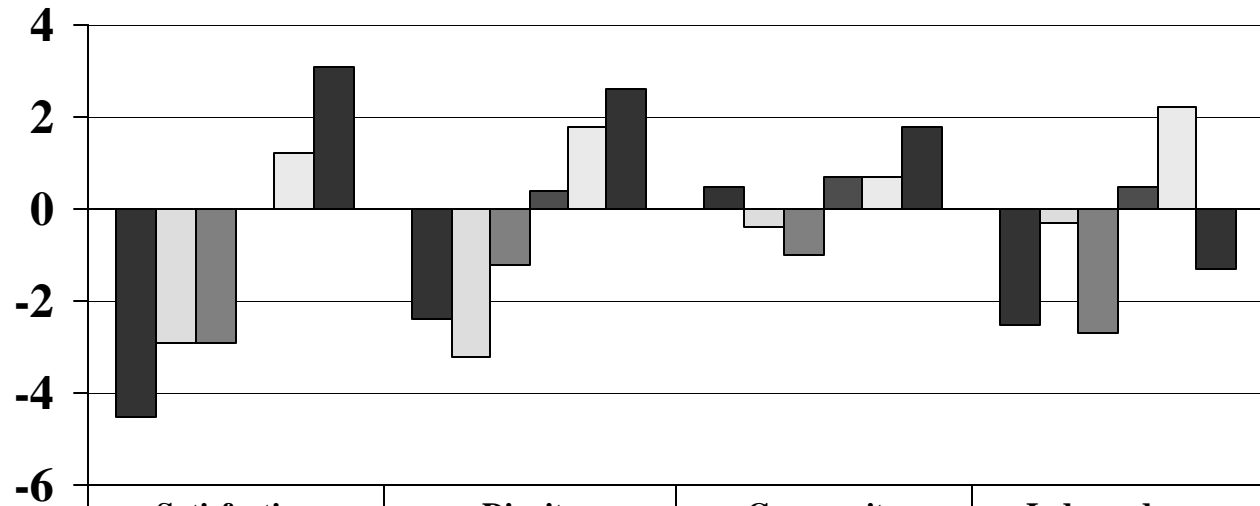
Baseline Path Model



Change Path Model



QOL Change by Residential Resource Change

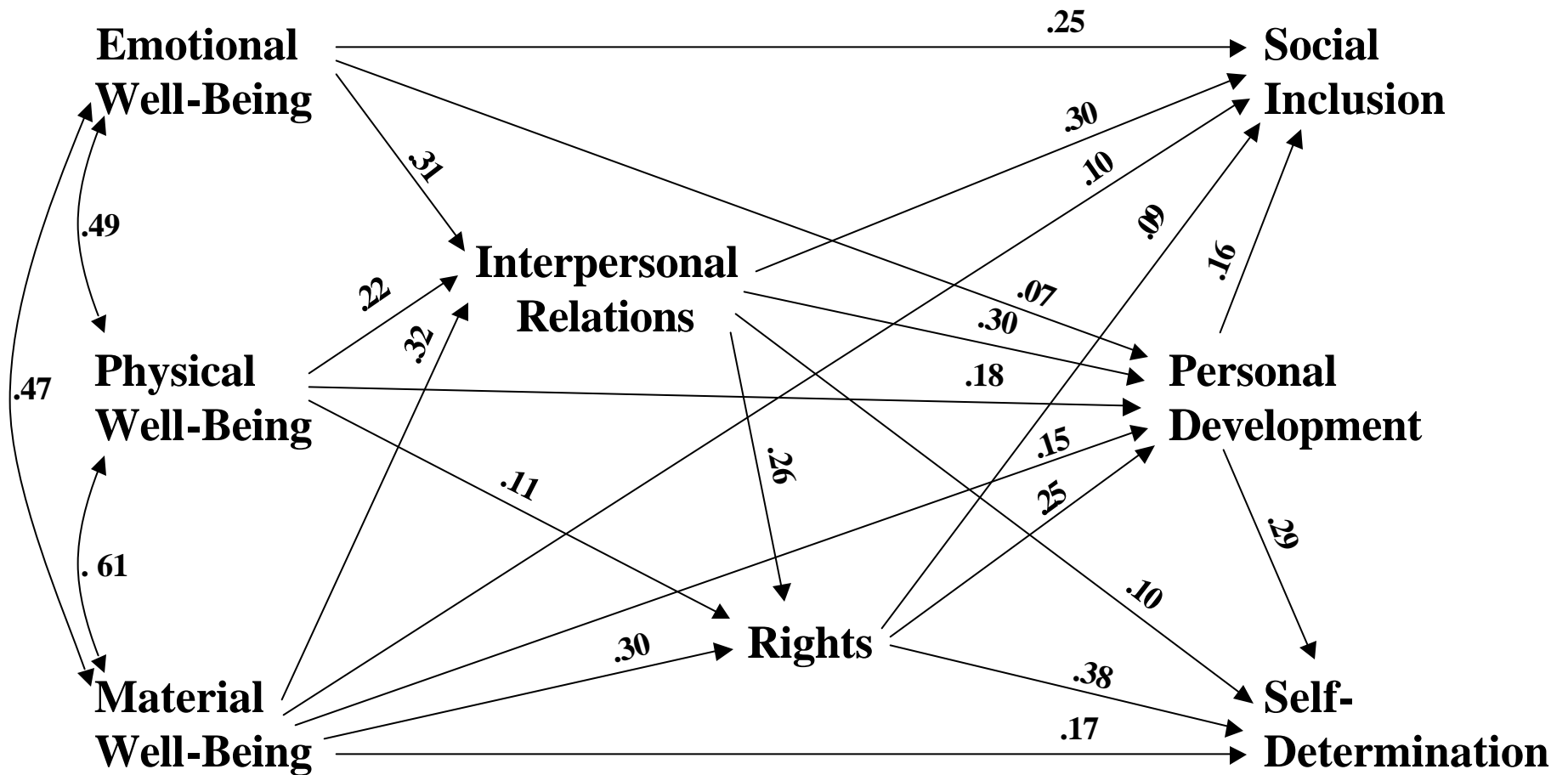


	Satisfaction	Dignity	Community	Independence
■ No Change & Decrease \$	-4.5	-2.4	0.5	-2.5
□ No Change & Increase \$	-2.9	-3.2	-0.4	-0.3
■ Waiting List	-2.9	-1.2	-1	-2.7
■ No Change	0	0.4	0.7	0.5
□ Change & Increase \$	1.2	1.8	0.7	2.2
■ Change & Decrease \$	3.1	2.6	1.8	-1.3

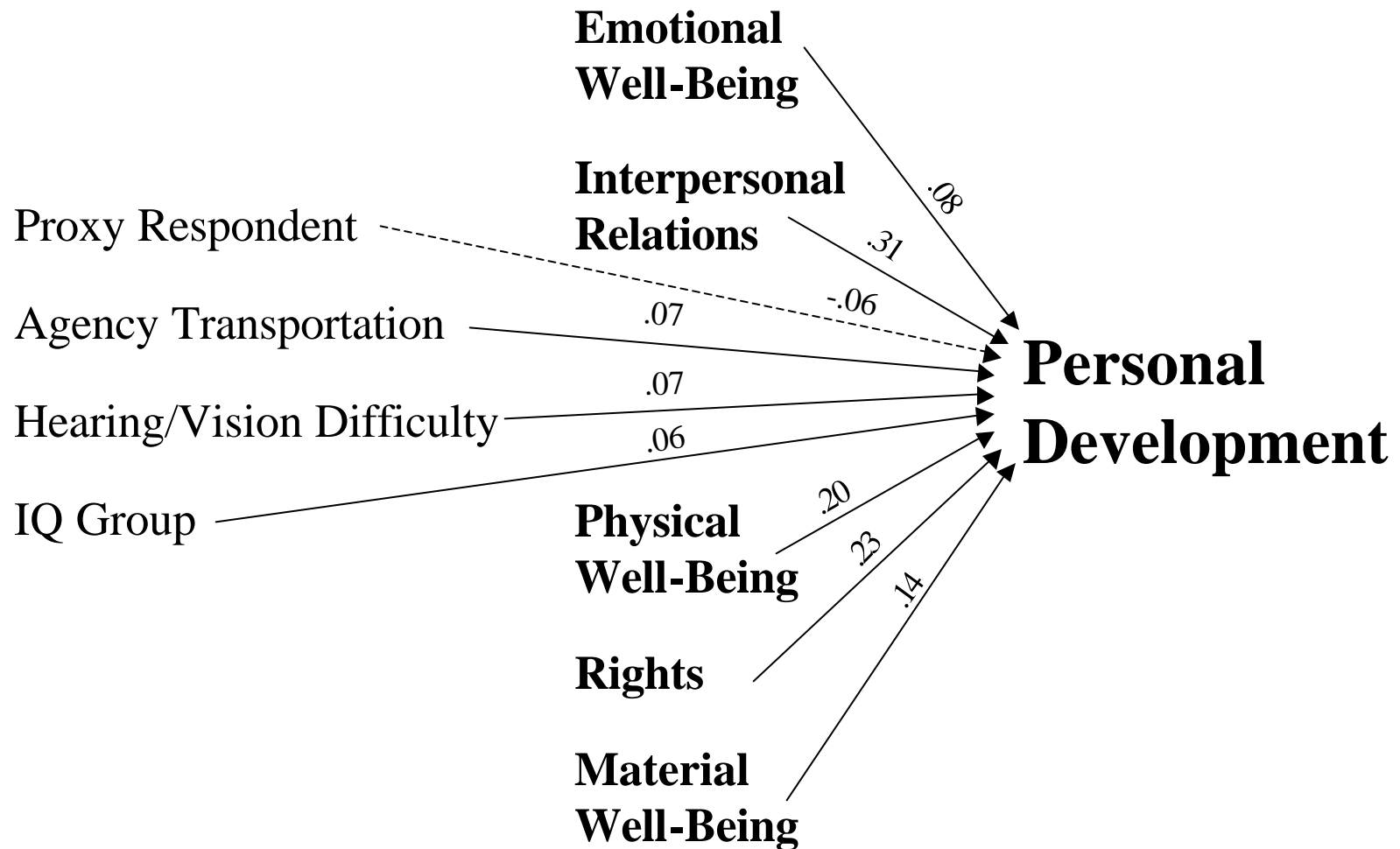
Rank Order of Quality of Life Research

- Social Inclusion
- Physical Well-Being
- Interpersonal Relations
- Material Well-Being
- Emotional Well-Being
- Self Determination
- Personal Development
- Rights

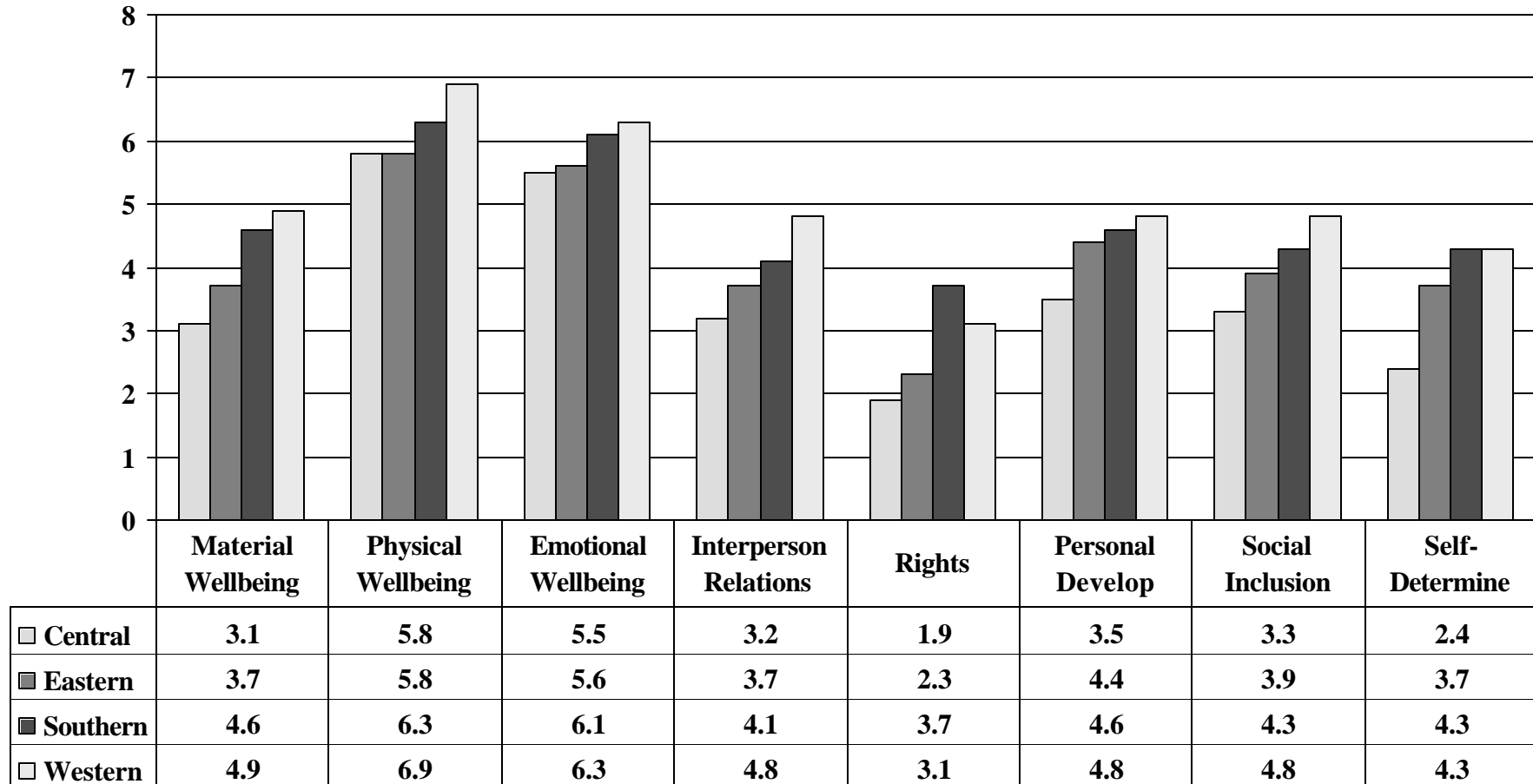
QOL Path Model: FY2001



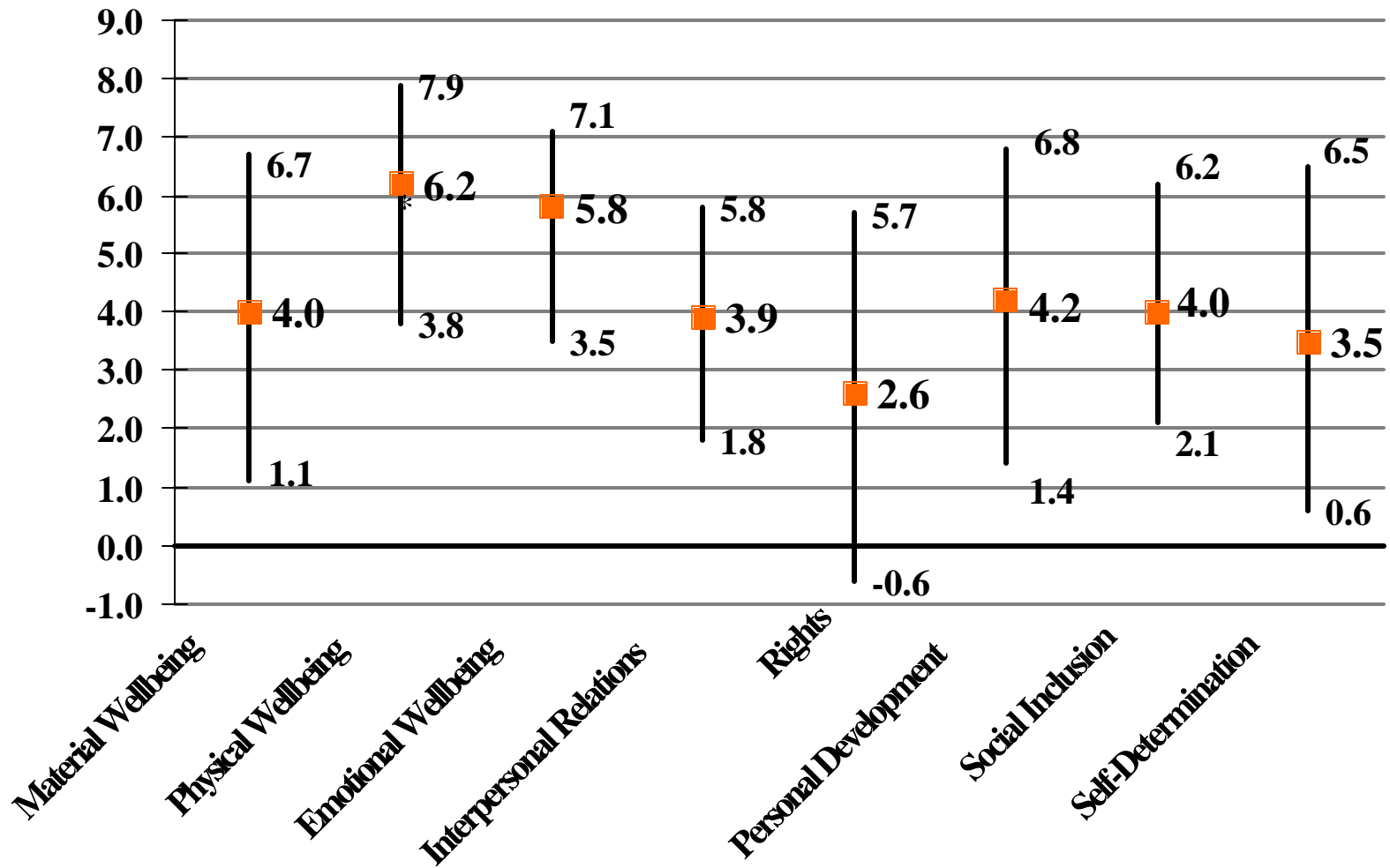
Influences on Personal Development



Average Quality of Life by Region: FY2001



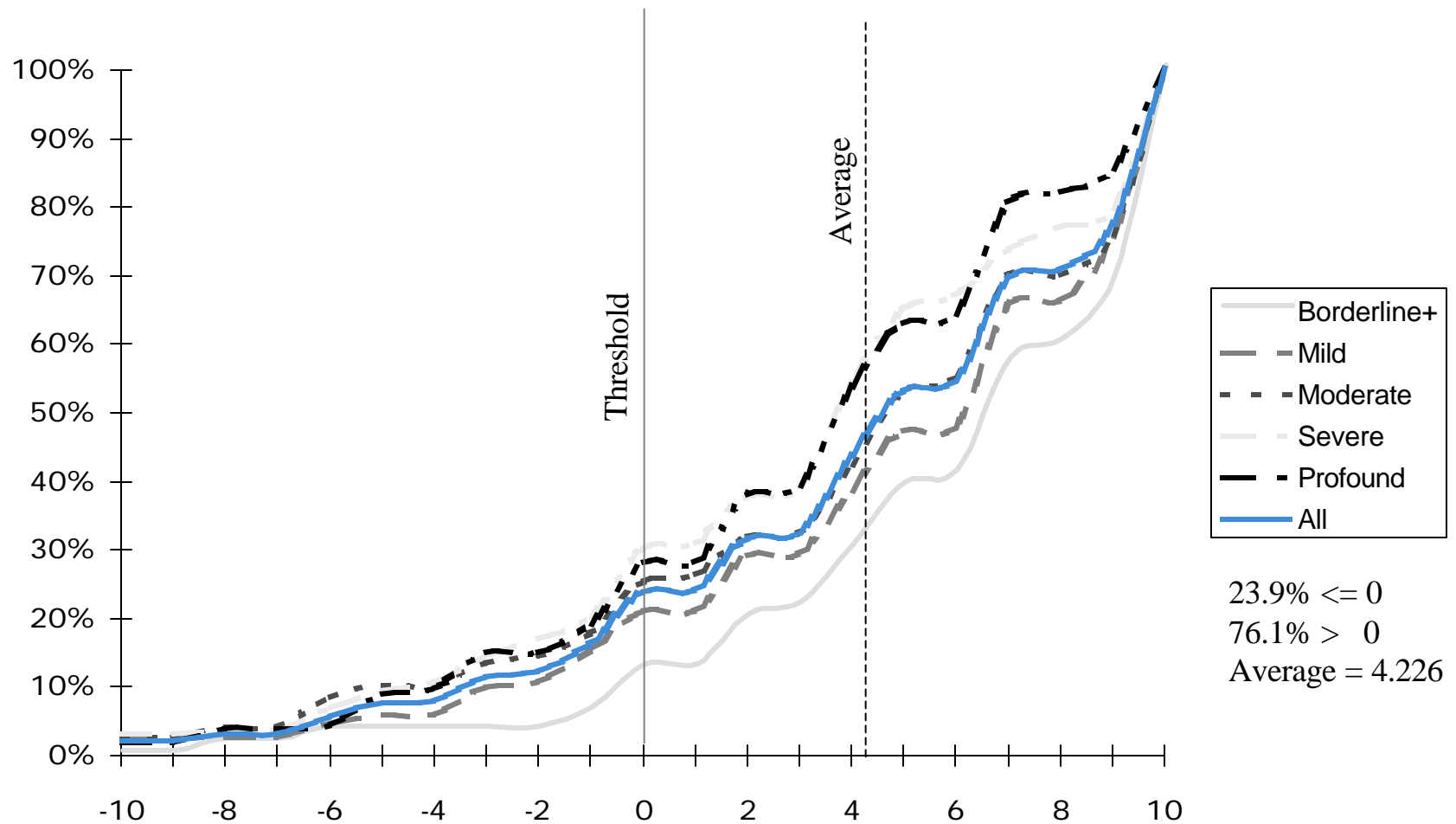
Range of Agencies Quality of Life Scores: FY2001



FY2002-05 Ask Me! Cycle

- Strata 1 (300+) 10 agencies serve 37%
 - Interviews every year (5 new in FY2002)
- Strata 2 (130-299) 21 agencies serve 27%
 - Interviews every 2 years (7 new in FY2002)
- Strata 3 (55-129) 40 agencies serve 25%
 - Interviews every 4 years (2 new in FY2002)
- Strata 4 (10-54) 46 agencies serve 10%
 - Random sample every year (0 new in FY2002)
- Strata 5 (<10) 31 agencies serve 1%
 - Not sampled

Personal Development Cumulative Scale Scores: FY2001



Agency Profile

😊 top 20%, 😐 middle 70%, ☹ bottom 10%

- Social Inclusion 6.2 😊
- Self Determination 5.1 😊
- Personal Development 4.5 😐
- Rights 4.0 😊
- Interpersonal Relations 5.6 😊
- Emotional Well-Being 7.1 😊
- Material Well-Being 4.5 😐
- Physical Well-Being 7.0 😊