



Noble
of Indiana

Enhancing Quality in Community Environments

Presenting:

Ervin J. Picha

President, CEO

Noble of Indiana

Mission Statement

***Noble of Indiana inspires
the community to recognize,
embrace and include the
contributions of
individuals with disabilities.***

Position Statements

- Dignity and Respect
- Living and Participating in the Community
- Inclusion in Early Childhood, Schools and Employment
- Positive Methods of Redirecting Responses

Policies and Practices

- Board Involvement and Oversight
- Relationship With Insurance Provider
- Risk Management
 - Safety Committee
 - Screening Employees
 - Training & Professional Development

Evolution of Community Services



1953
Noble
School
Founded

1965
Noble
Industries
Opens

1973
Schools serve
students with
disabilities;
Noble expands
preschool
services

1974
Adult Day
Activities
Offered



1980
Noble
Greenhouse
opens



1986
Supported
Employment
Offered

1986
ALL children
served in the
community

Evolution of Community Services



1989
Work
Crews
Offered

1996
Noble
Greenhouse
Closes



1999
Strategic
Planning
Phase

2001
Launch of



1996
Sold
Original
School
Building

1996
More
adults
served in
community



2000
East Side
Industries
Workshop
closes

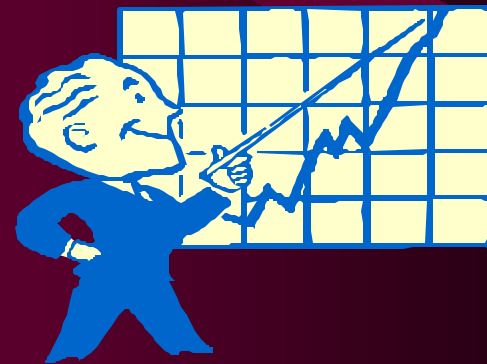
Noble Communitas

Redefining Community

- **Planning Process**
- **Driving Principles**
 - Honoring Commitments
 - Best Practices
 - Self-Determination
 - Lifestyle Planning
 - Individual Budgets
 - People First Philosophy

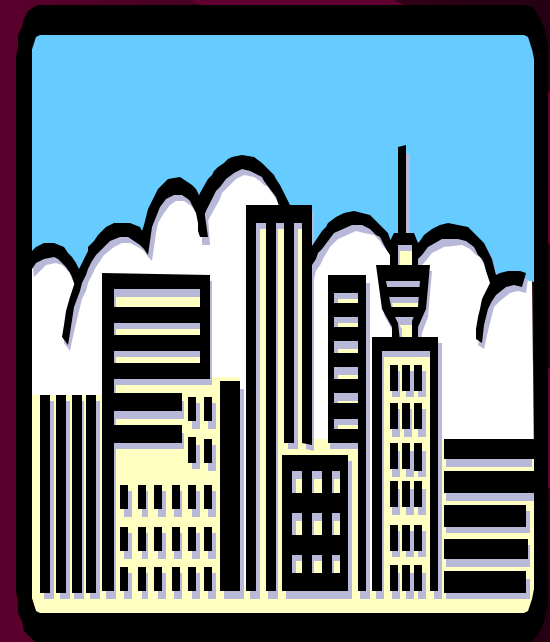
Outcome Measures

- Indiana Day and Employment Services Outcome System
- Core Indicators Project Consumer Survey
- The Council on Quality and Leadership
- Constituent Surveys



Community Partners

- Indiana Institute on Disability & Community
- National Advisory Council
- Board of Directors
- State of Indiana
- Indianapolis Community



Next Steps

- Tracking System – Data Collection
 1. Individualized Tracking Systems
 2. Finance & Accounting
 3. Programmatic Results
- Sharing Results of Transition Process With Key Stakeholders